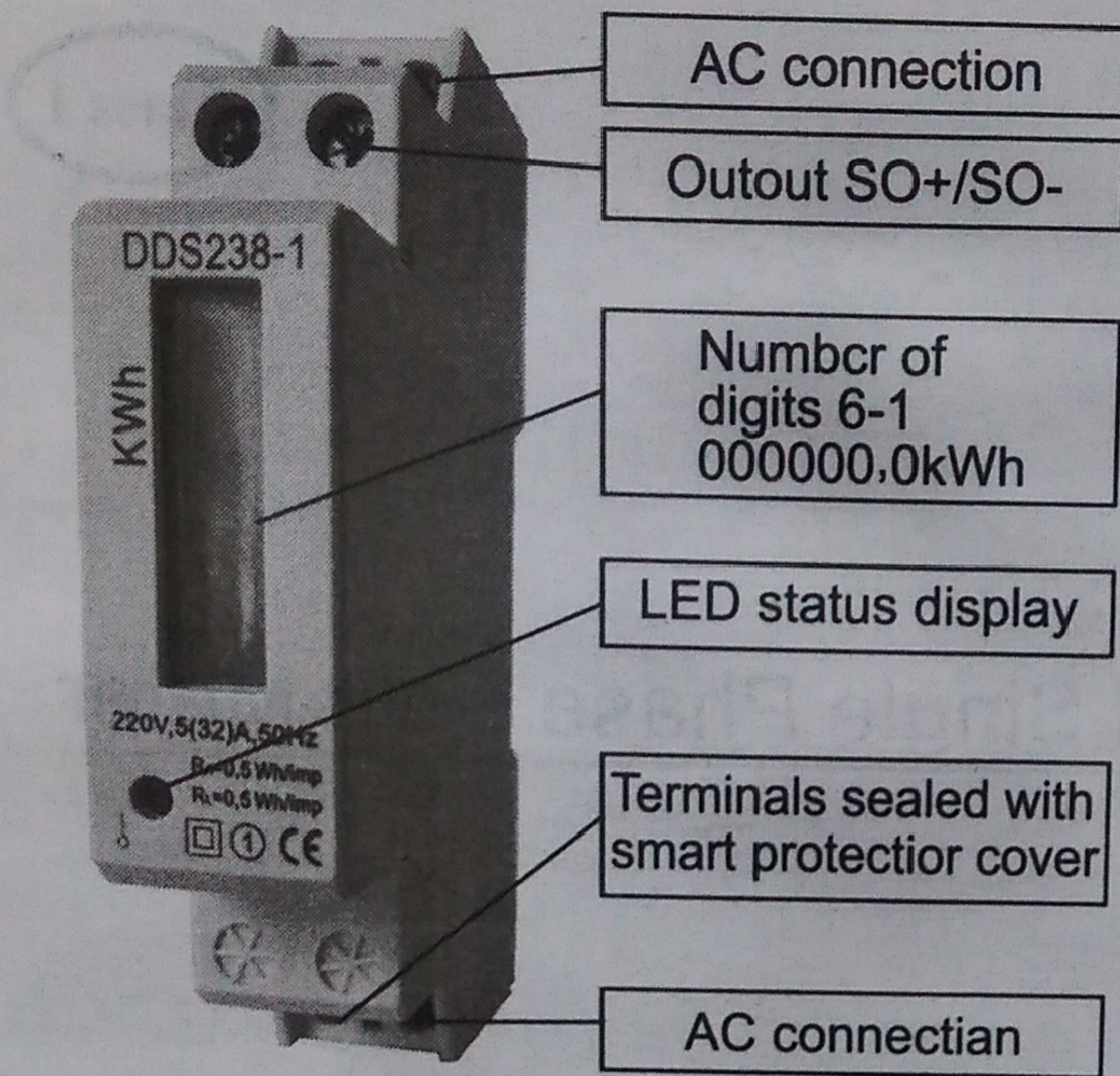


Class 1

DIN –rail Mounted Single Phase kWh Meter

USER MANUAL



technical specifications:

Single phase kWh static meter

220/230V, 5/30A, 50/60Hz (see meter)

Performance corresponding to EN62052 and "CE" requirements

Accuracy class : 1

Mounting : on a DIN-rail corresponding to DIN EN50022

1TE : 18mm (DIN 43880)

Interface : optical coupler (SO corresponding to DIN 43864)

Impulse valence $R_a=0.5$ or 1.0 Wh/imp (see meter)

3 color LED

Green : Consumption less than 4W or no load

Salmon/pink : Consumption $>4W$, flashing rate — consumption

Flashing Red : Connected reverse

Display: 6+1 digits =999999.1kWh

Power consumption : <2VA

Voltage operating range : 184—265VAC

Current operating range : 0.02—30A

Starting current at Cos-Phi=1 , typical 15mA

Frequency range : 50/60Hz \pm 10%

Registered harmonics : up to 7kHz

Temperature range: -20°C to +65°C

Relative air humidity maximum:

average value of year : 75%, short time value : 95%

Installation guide

Vertical version: 220/230V \pm 10%, max 30A, 50/60Hz (see meter)

For monitoring purpose only

For intern measurements: electrical operations/limiting values are valid

Power supply:

-Corresponding with mode of connection 1000 of DIN 43856 (see meter)

-Phase supply lead "L" to terminal 1

-Neutral supply lead "N" to terminal 4

-Phase consumption lead "L" to terminal 3

-Neutral consumption lead "N" to terminal 6

-Fuses & wiring

-for fuse 10A , tripping characteristic B : minimum wire thickness 1.5mm²

-for fuse 16A , tripping characteristic B : minimum wire thickness 2.5mm²

Passive impulse contact

-corresponding to "SO" conditions of DIN 43864

18—27V : max 27 mA : max length of lead : 20m

impulse length > 30ms : connection to terminal 20 & 21

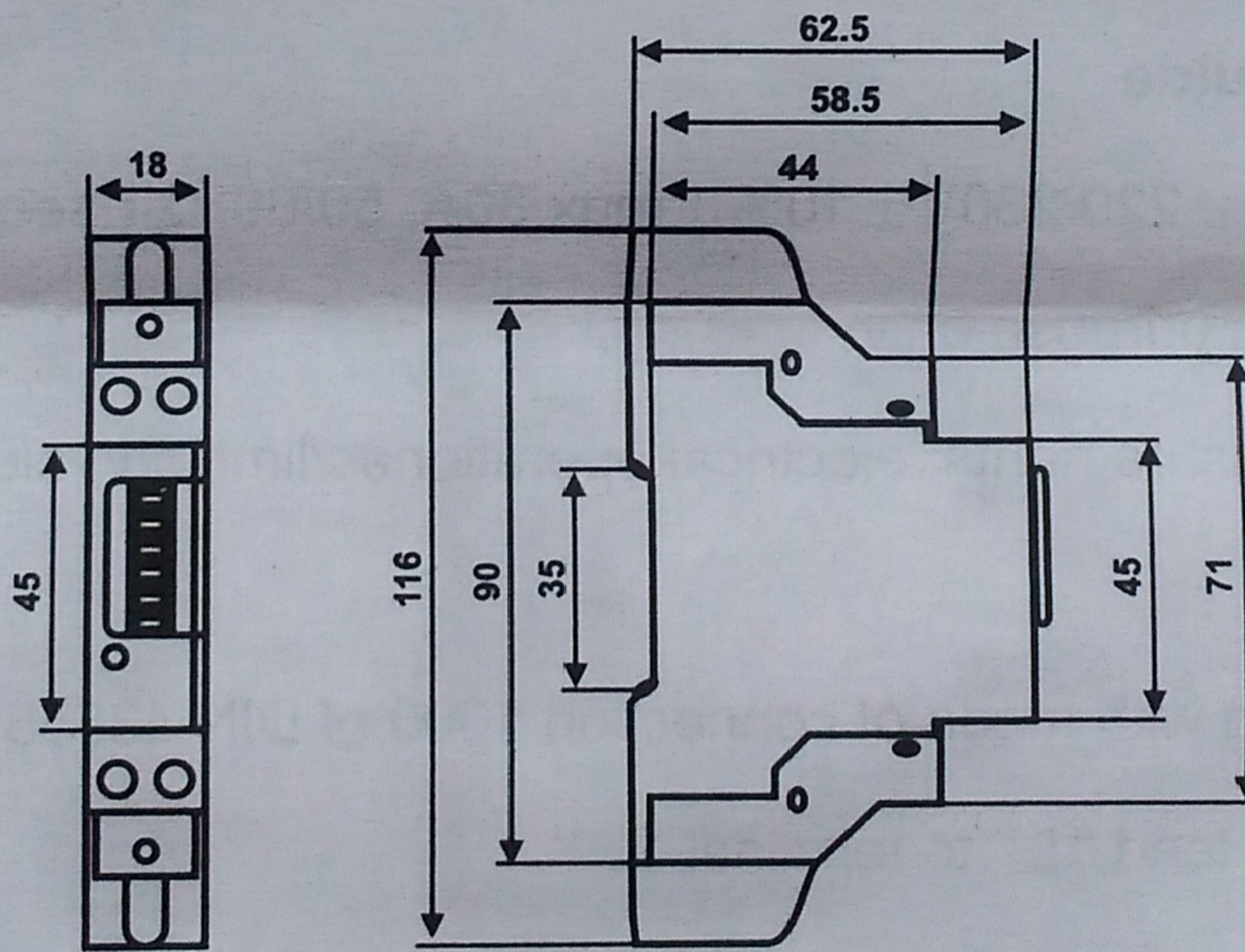
-limits of values: max 60VDC: max30mA

diode against wrong connection is integrated (parallel)

Attention : Case is sealed , do not open the meter !

No warranty if case is opened or warranty seal is removed .

Dimension:



Connection diagram :

