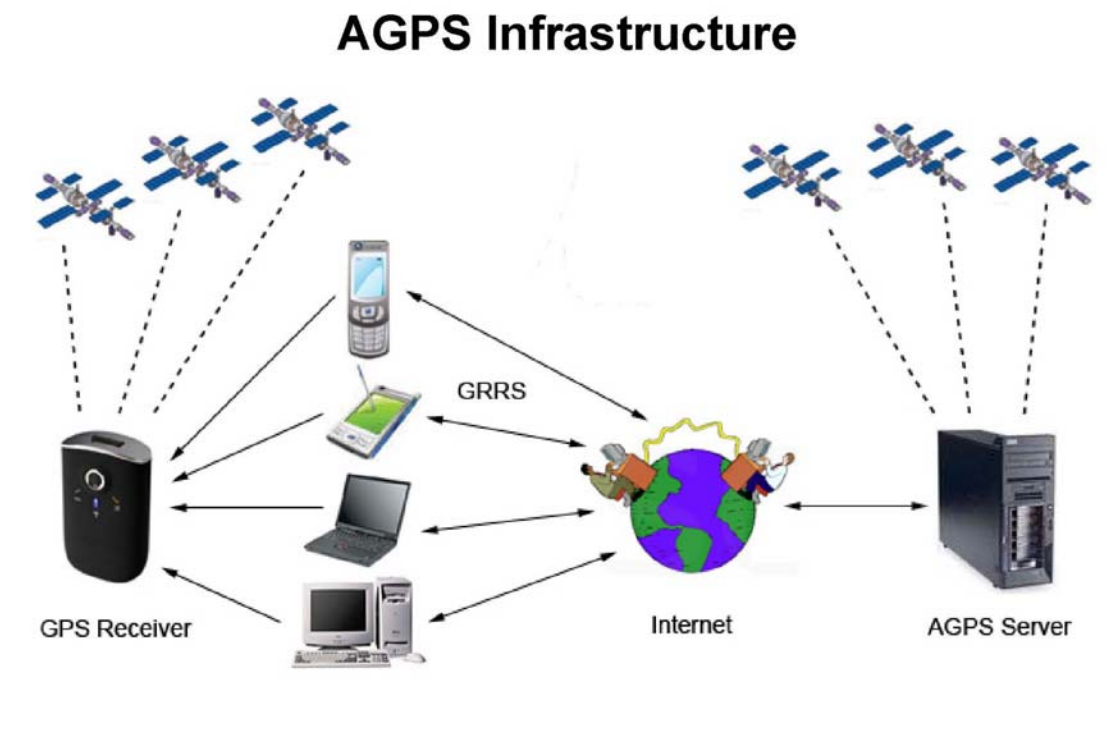


GPS Viewer User's Manual (PC)

VENUS 6 series AGPS AGPS Infrastructure

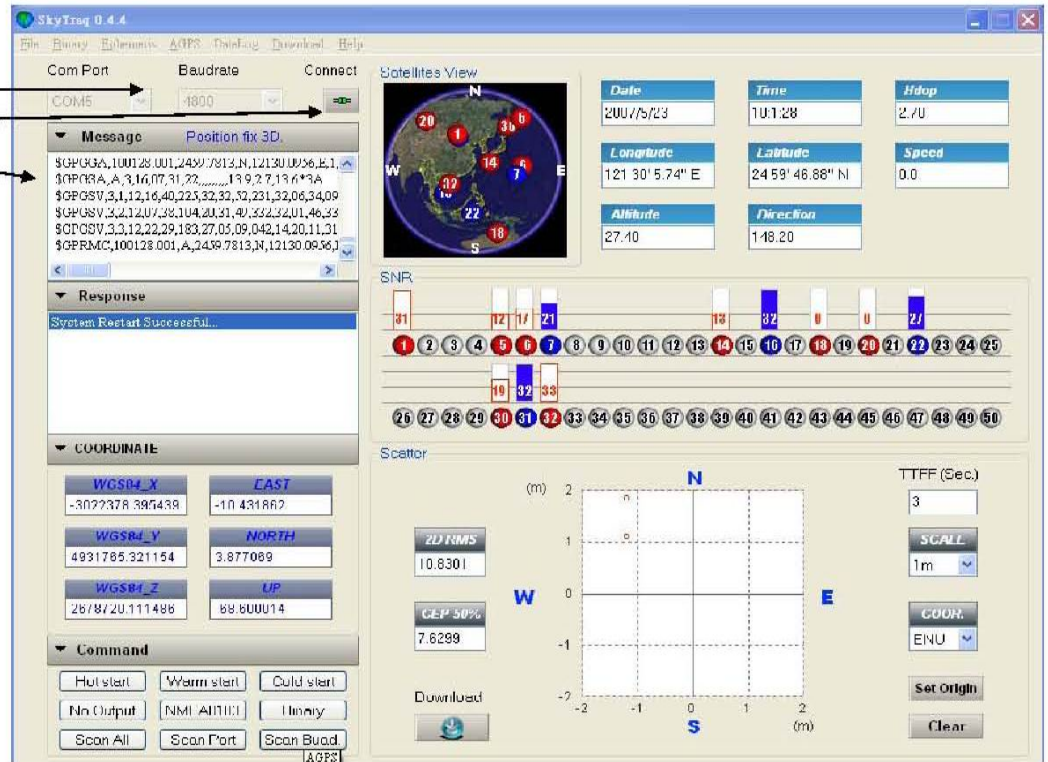


Preliminary, Proprietary and Confidential

STEP 1: Connect your GPS device

Connect your GPS device to PC
Choose Com Port and Baudrate
Click Connect
See the NMEA Message

PS: Make sure your internet was connected



P.S.:

- 1) Turn on Laptop/UMPC, please identify which COM port has been used (occupied) by USB GPS Dongle. The ways how to check COM port has been used by **GPS USB Dongle** are as following ; Double clicks "**Control panel (C)**" Double clicks "**System**" Click "**hardware**"Click "**Hardware Manager**"Double clicks "**COM Port**", then user can find which COM port has been occupied by **GPS USB Dongle**.
- 2) Make sure baud rate set at **38400** bps (standard) in your application program
- 3) In firstly use of this GPS USB Dongle, we strongly recommend you to bring your GPS USB Dongle receiver **outdoor or open sky at least 15~20 minutes for sure 3D position fixed and almanac updated.**