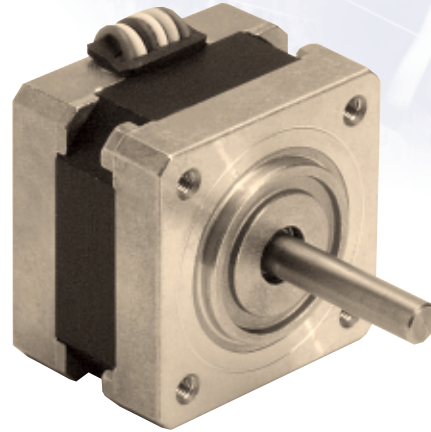
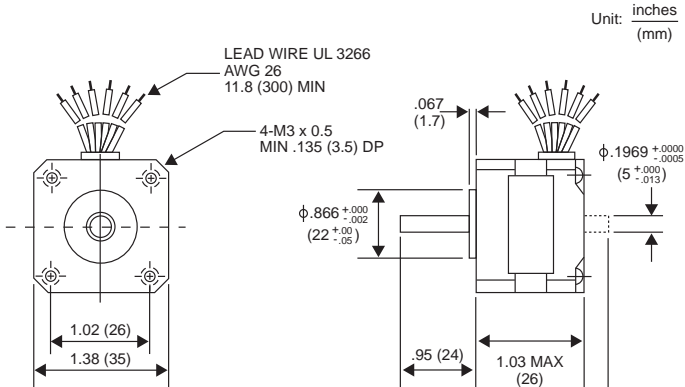
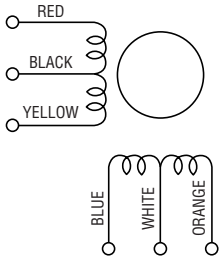


# 14PM-M 1.8° HYBRID

# 14PM-M 1.8° HYBRID



## WINDING DIAGRAM



## GENERAL SPECIFICATIONS

Step Angle .....	1.8°
Step Angle Accuracy .....	+/-5%
Temperature Rise .....	80° C Max.
Ambient Temperature Range .....	-20° to +50° C
Insulation Resistance .....	100M $\Omega$ Min., 500 VDC
Dielectric Strength .....	500 VAC for 1 min.
Radial Play .....	0.02 mm Max. (450 g-load)
End Play .....	0.08 mm Max. (450 g-load)
Switching Sequence .....	See page 31

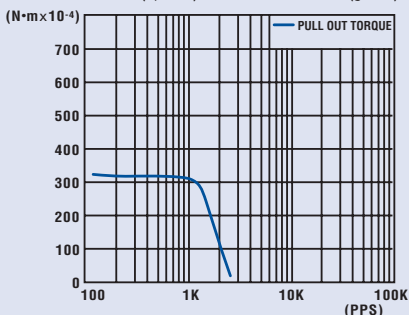
## MODEL SPECIFICATIONS

Model Number	Rated Voltage V	Rated Current/ Phase A	Winding Resistance/ Phase $\Omega$	Holding Torque g-cm	Inductance mH	Rotor Inertia g-cm <sup>2</sup>	Detent Torque g-cm	Weight g
14PM-M204	12.0	0.18	65.0	330	24.0	11.0	50	110
14PM-M206	5.2	0.4	13.0	330	4.8	11.0	50	110

## TORQUE/SPEED CHARACTERISTICS

### Model: 14PM-M204

Driver: Unipolar Chopper Dual • Supply Voltage: 24.0 (Volt)  
Drive Current: 0.18 (A/WDG) • Load Inertia: 34.0 (g-cm<sup>2</sup>)



### Model: 14PM-M206

Driver: Unipolar Chopper Dual • Supply Voltage: 24.0 (Volt)  
Drive Current: 0.40 (A/WDG) • Load Inertia: 34.0 (g-cm<sup>2</sup>)

