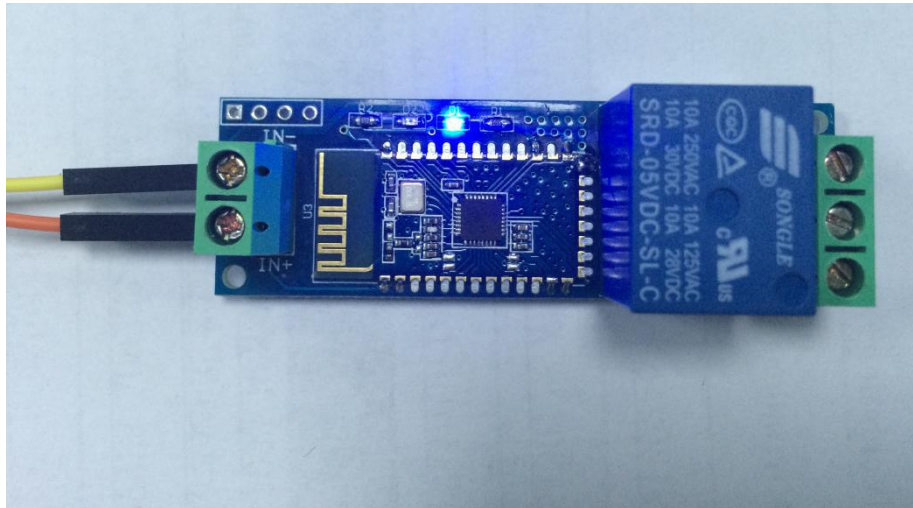
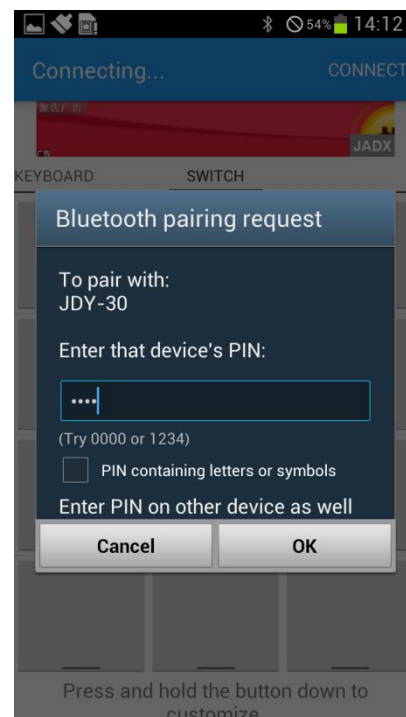
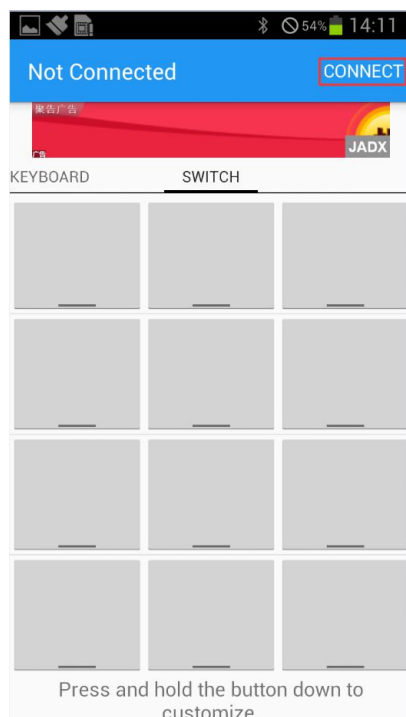


1,Signal channel Bluetooth relay module basic instructions:

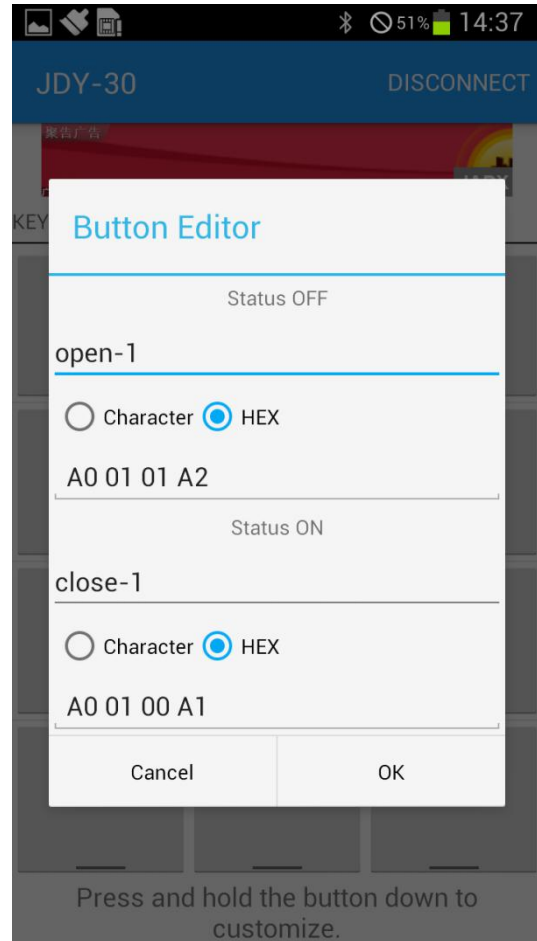
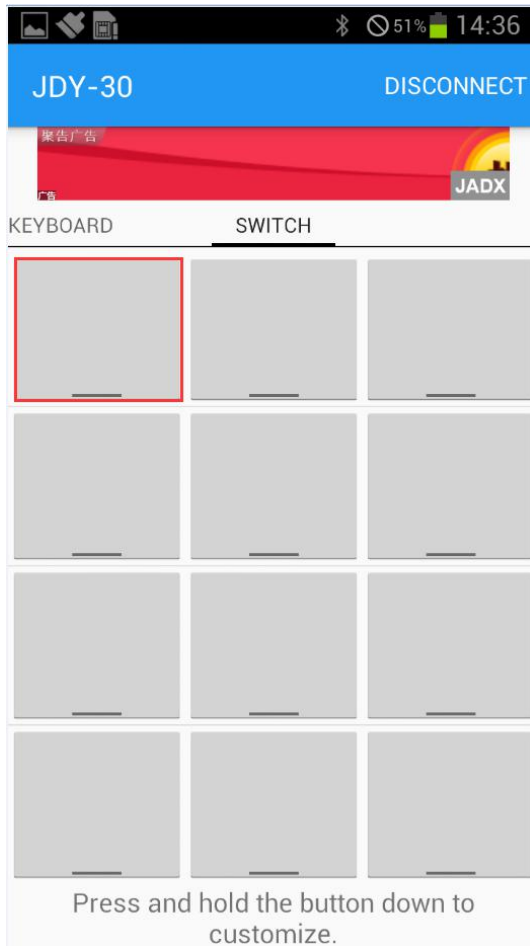
(1) IN+ and IN- connect to 5V power adapter(this is an example for 5V version,if you bought is 12V version,please use 12V power adapter)



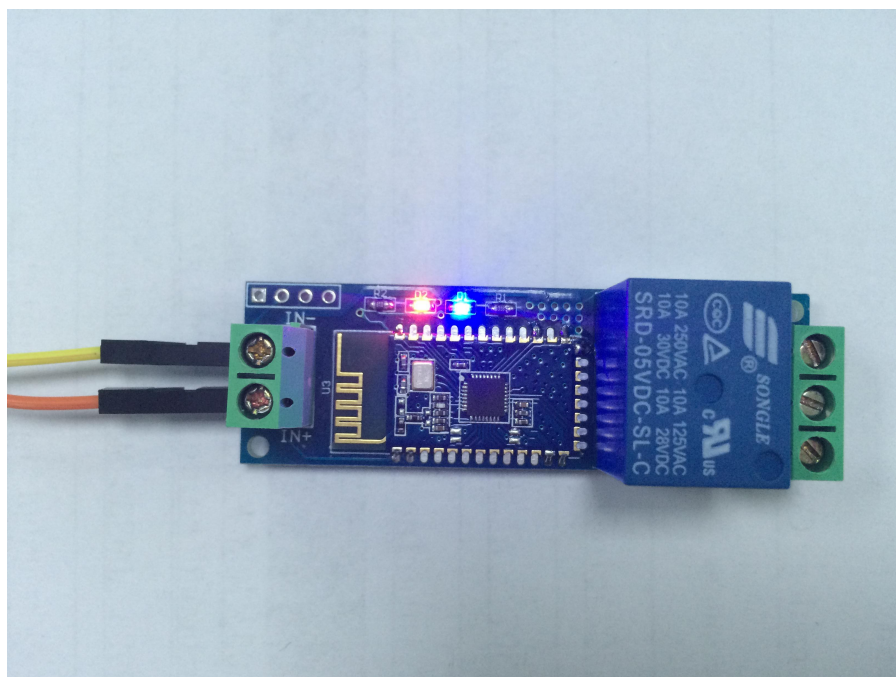
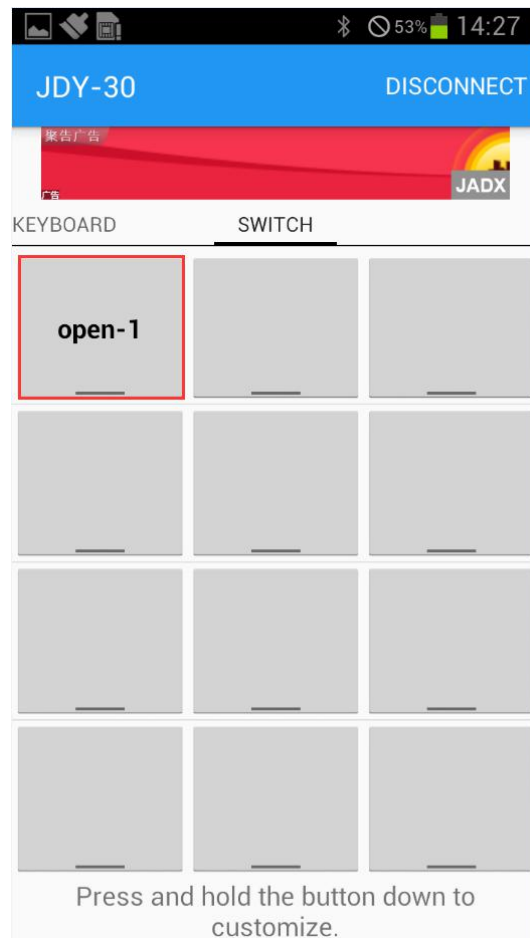
(2) Install the “BlueSPP_37” APP on your Android phone, enable your phone’s bluetooth function. Open the APP and click “connect”, select BLT device (such as BTA-04, JDY-30,etc) and insert password(the default password is 1234)



(3) Press the function blocks and enter the name and content of the serial command(A00101A2 open relay,A00100A1 closed relay,command format must be hex)



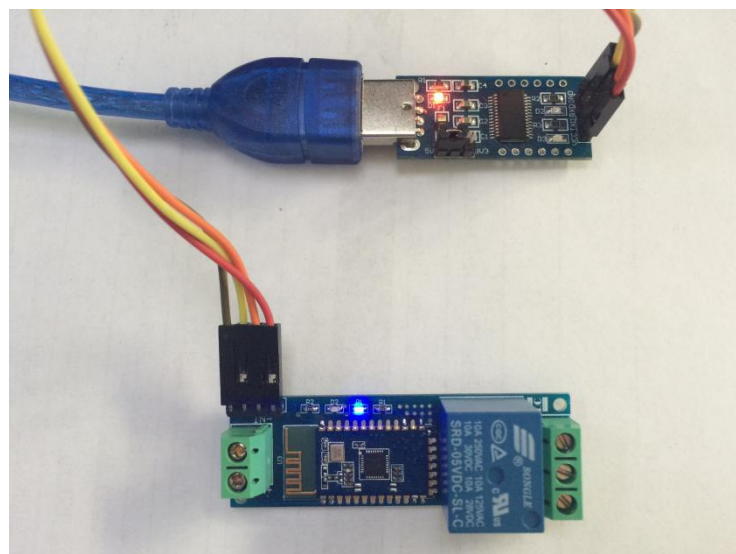
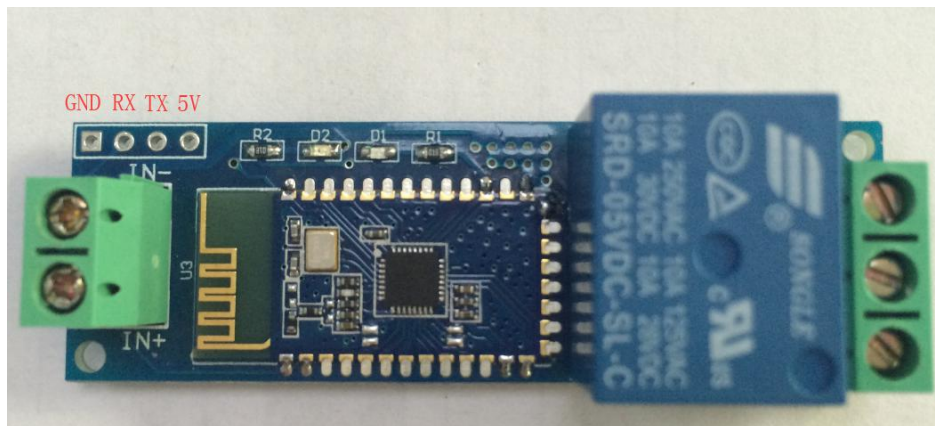
(4) Finally you can send serial command to control the relay by click the function blocks.



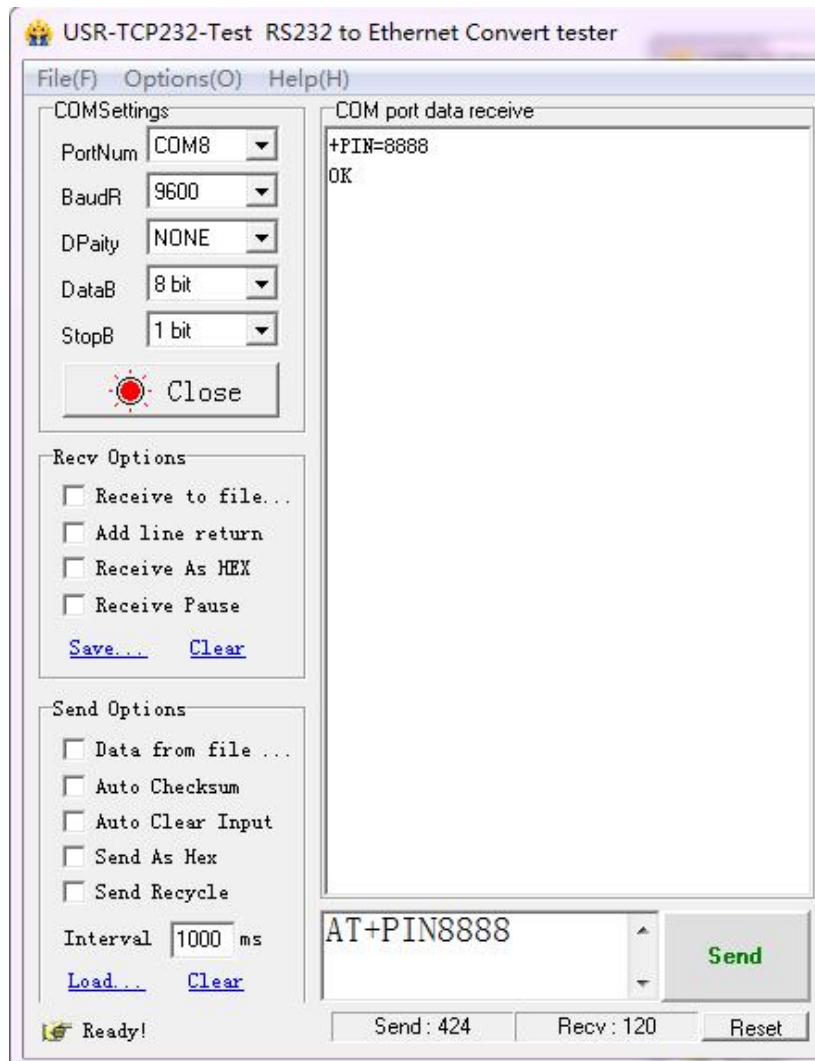
2, How to modify the Bluetooth(BLT) device password and name:

We can send AT command to BLT device via UART to set the parameter of BLT device. The mode of BLT device is depend on the status between your phone and BLT device. It's AT mode when unconnected, and it's transparent transmission mode when connected.

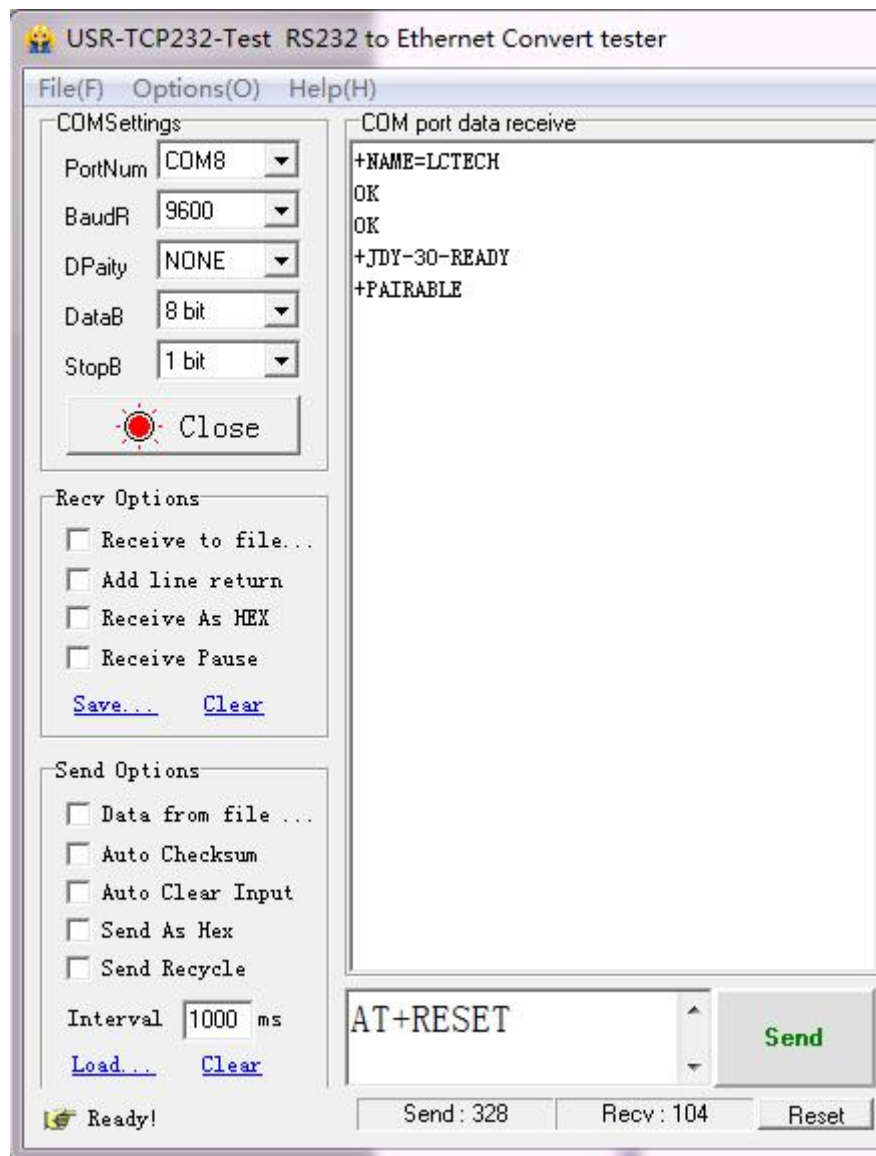
Method: Using an USB to TTL serial port module(such as FT232: http://www.chinalctech.com/index.php?_m=mod_product&_a=view&p_id=809), and 5V,TX,RX,GND pin of FT232 connect to IN+,TX,RX,IN- pin of relay module,Open serial debugging software on the PC, sending AT command to configurate BLT device.



(1) Modify the BLT password: For example, if we want to change the password(default is 1234) to 8888, we can send “AT+PIN8888”.



(2) Modify the BLT name : For example, if we want to change the device name to LCTECH(default is BTA-04,JDY-30,etc), we can send “AT+NAME=LCTECH” , and then send “AT+RESET” can set the device name as LCTECH.



Regarding the common AT command of BTL device as below:

(1)Test : AT

(2)Reset: AT +RESET

(3)Get version: AT +VERSION

(4)Restore default: AT +DEFAULT

(5)Inquire bluetooth address: AT +LADDR

(6)Set/Inquire device name: AT +NAME,such as send "AT+NAMELCTECH", and then send "AT+RESET" can set the device name as LCTECH

(7)Set/Inquire password: AT +PIN, such as send "AT+PIN8888" can set the password as 8888

For more AT command details, please see the BLT device datasheet (SPP-C AT command).

Kindly Remind:

1, If no response when send AT command, maybe you need press ENTER before click "Send".

2, When you send AT command configurate BLT device, the status between your phone and BLT device must be unconnected, otherwise the AT command will be invalid

深圳市艾尔赛科技有限公司
Shenzhen LC Technology Co., Ltd.

邮编: 518000
Postcode: 518000

传真: 0755-83834706
Fax: 86-755-83834706

电话: 0755-82720811
Tel: 86-755-82720811

手机: 18927473783
Mobile: 86-18927473783

广东省深圳市龙华新区东环一路中泰电子科技园 1 栋 202 室
Address: Room 202, Building No.1, Zhongtai Electronic Hi-Tech Park, Donghuan 1st Road, Longhua District, Shenzhen, Guangdong, China