



DSMOTORS

深圳市东顺电机有限公司

SHENZHEN DONGSHUN MOTOR CO., LTD

产品规格书

MOTOR SPECIFICATION

TEL:0755-27919027 FAX:0755-27914710

Website:Http://www.dongshunmotor.com



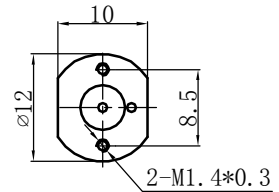
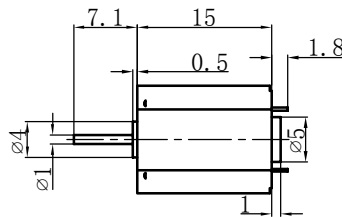
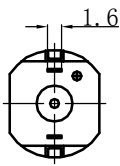
DS-N20PA/PN

OUTPUT: APPROX. 0.2-0.8W

MODEL	VOLTAGE		NO LOAD		AT MAXIMUM EFFICIENCY				STALL	
	OPERATING RANGE (v)	NOMINAL	SPEED r/min	CURRENT A	SPEED r/min	CURRENT A	TOGQUE g. cm	OUTPUT W	TOGQUE g. cm	CURRENT A
DS-N20PA-10190	2.0-5.0	3V	12100	0.045	9390	0.16	2.1	0.2	9.2	0.54
DS-N20PN-08260	1.5-6	3V	8200	0.04	5920	0.1	1.7	0.11	6.2	0.27

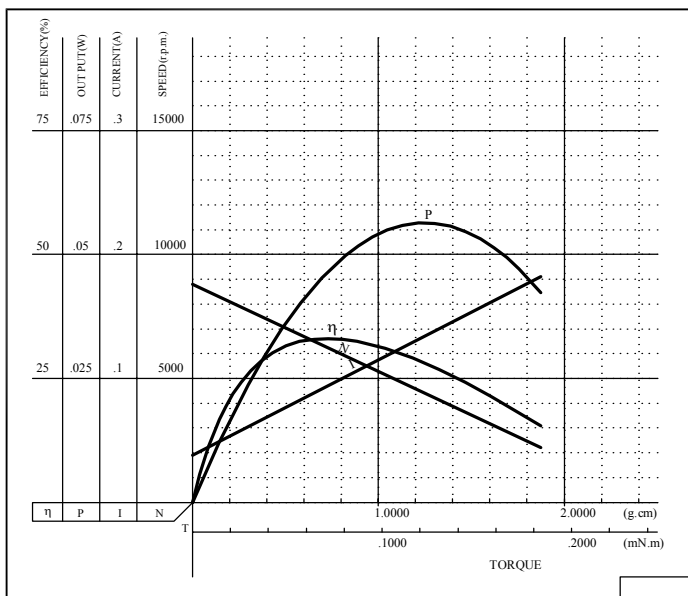
Unit:mm

WEIGHT:5g



MODEL:DS-N20PA-10190

VOLTAGE: 3.0V



MODEL:DS-N20PN-08260

VOLTAGE: 3.0V

