



PRODUCT

AC - DC power managem... >

**LED lighting driver chip** >

High voltage linear

Non-isolated

Isolated

Synchronous rectifier chip >

Quick charge chip >

Envelope tracking chip >

Consultation  
+86 (29) 8882-7769

If you would like to know more about our products please contact our sales team!



**RM9003X**  
Single-Channel Linear Constant Current LED Driver

**Features:**

- Simple peripheral circuit, without magnetic components
- More chips in parallel application
- LED current can be set externally
- Application solutions without EMI problems
- Have a over-temperature adjusting function

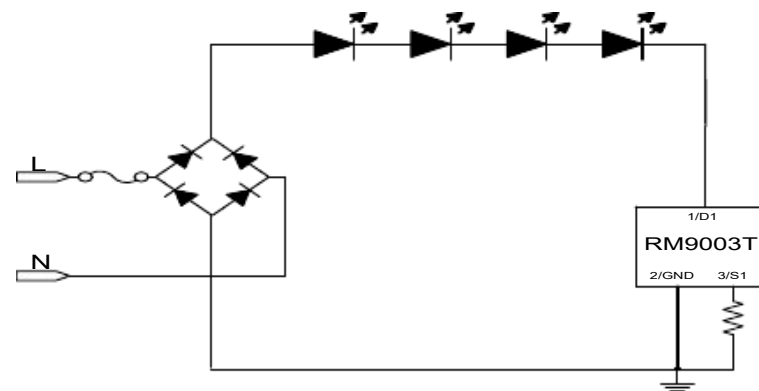
**General description :**

RM9003X is a single-channel LED constant current drive control chip, which can directly drive high voltage LED string and integrate 600V high voltage MOS tube. The output current can be set by the external resistor in the range of 5 mA ~ 100mA, and the output current does not change with the input voltage. RM9003X series chip application line is simple and has few external components. The program cost is low.

**Applications :**

The filament lamp, ball bubble lamp, such as T torch LED lamps and lanterns.

**Typical application:**



RM9003T typical application circuits

**Product series:**

| Product model | Circuit topology | Temperature control point (°C) | Current limiting benchmark ( V ) | MOS withstand voltage | Package Type               | Performance        |
|---------------|------------------|--------------------------------|----------------------------------|-----------------------|----------------------------|--------------------|
| RM9003A/B     | linear           | 110/130                        | 0.6                              | 600V                  | TO252E<br>SOP-8S<br>OT89-3 | Single-channel LED |
| RM9003E       | linear           | 110/130                        | 0.6/1.0                          | 400V                  | ESOP-8                     | Single-channel LED |
| RM9003S       | linear           | 110/130                        | 0.6/1.0                          | 400V                  | SOT89-3                    | Single-channel LED |
| RM9003T       | linear           | 110/130                        | 0.6/1.0                          | 400V                  | To-252                     | Single-channel LED |