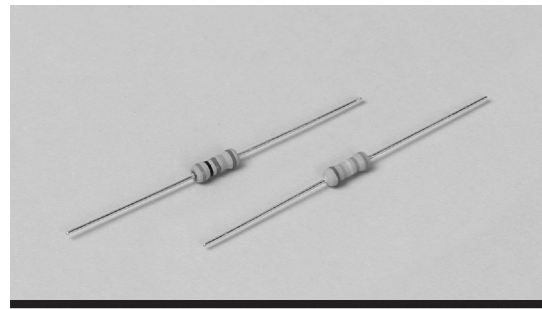
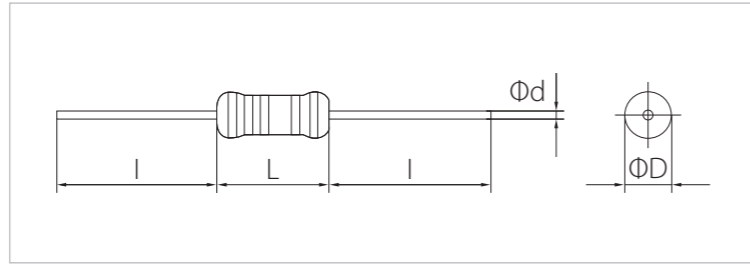


# PRC/PRM Surge Resistor-Flame Proof Coating

RoHS HF



## ● Dimension

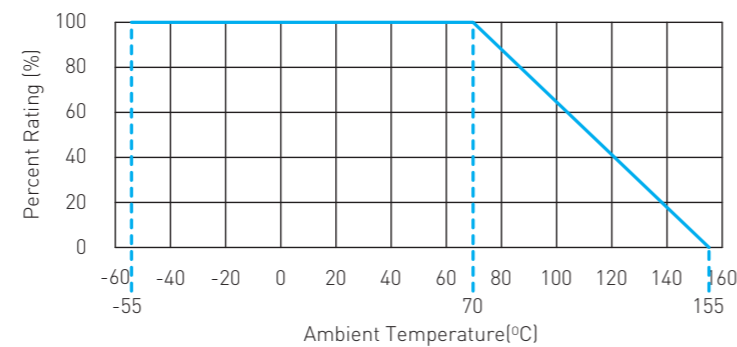


Type	Dimension (mm)				
	L	ΦD	l	Φd	
PRM 1/4W	3.2±0.3	1.8±0.2	28.0±3.0	0.43±0.02	
PRC 1/4W	PRM 1/2W	5.8±0.5	2.3±0.2	27.0±3.0	0.55±0.02
PRC 1/2W	PRM 1W	8.5±1.0	3.2±0.5	26.0±3.0	0.70±0.02
PRC 1W	PRM 2W	11.0±1.0	4.0±0.5	28.0±3.0	0.80±0.02
PRC 2W	PRM 3W	15.0±1.0	5.5±0.5	28.0±3.0	0.80±0.02

## ● Type Designation

PRC	01	T3	10R0	J
Products Code	Power Rating	Style	Nominal Resistance	Resistance Tolerance
	94: 1/4W 92: 1/2W 01: 1W 02: 2W 03: 3W	T: Axial Type F/L: Punching Type R/M: Forming Type	10R0: 10Ω 100K: 100KΩ 10M0: 10MΩ	F: ±1% G: ±2% J: ±5% K: ±10%

## ● Derating Curve



PRC is made by metal glazed and flame retardant coating on the surface with excellent anti-surge characteristics and stable and at even high resistance range. PRC comes with competitive price and its high performance is qualified.

## ● Features

- Excellent anti-surge characteristics.
- Highly stable against environmental conditions and over load.
- Wide range of resistance value.
- Available discharge path value.
- Flame retardant coating.

## ● Approval

Agency	Item	File No.
	PRC 1/2W 480K~12M	E187666
	PRC 1/2W 470K~12M	5002752-4750-0001
	PRC 1W 470K~12M	
	PRM 1/2W	CQC1100106608

## ● Rating

Type	Max Working Voltage (V)	Max. Overload Voltage (V)	Dielectric Withstanding Voltage (V)	Resistance Range (Ω)	Resistance Tolerance (%)	Operating Temp. Range (°C)	Ambient Temperature (°C)
PRM 1/4W	300	500	300	100K~33M	F: ±1 G: ±2 J: ±5 K: ±10	-55~+155	70
PRC 1/4W	700	1,000	500	3.3~33M			
PRC 1/2W				PRM 1W			
PRC 1W	1,000	1,500	500	100K~33M			
PRC 2W				PRM 3W			

★: 36M~360M only K grade

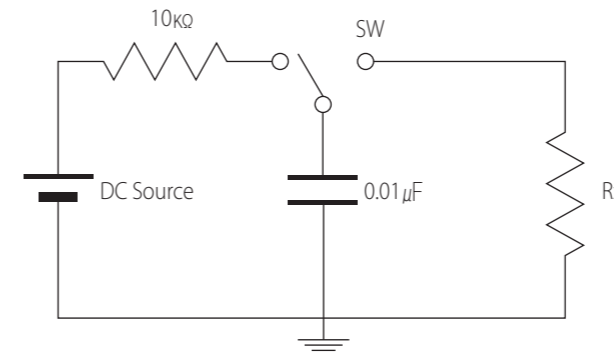
## ● Shape

Type	Axial Type		Punching Type		Forming Type	
	52mm	63mm	F-	L-	R-	M-
PRM 1/4W	○	-	-	-	-	-
PRC 1/4W	○	-	○	○	○	-
PRC 1/2W	○	-	○	○	○	○
PRC 1W	-	○	○	○	○	○
PRC 2W	-	○	○	○	-	○

## ● Performance

Test Items	Performance Requirements	Test Methods
Resistance	Within specified tolerance	Measure resistance at 25°C
T.C.R	3.3Ω ~ 10KΩ : -1,000PPM/°C Over 11KΩ : ±350PPM/°C	+25°C/+125°C
Short Time Overload	±[1% + 0.05Ω]	Rated voltage x2.5 for 5sec or Max overload voltage
Resistance Against Soldering Test	±[2% + 0.05Ω]	260±5°C, 2~2.5mm, 10±1 sec measure resistance After 1hr at room temp
Load Life in Moisture	±[5% + 0.1Ω]	40±2°C, 90~95%RH, 1.5hr ON/0.5hr OFF cycle, 1,000hr
Load Life in Temperature	±[5% + 0.1Ω]	70±2°C, 1.5hr ON/0.5hr OFF cycle, 1,000hr
Surge	±[10% + 0.1Ω]	Refer to *TEST circuit

## \*TEST Circuit



Resistance (Ω)	Pulse Voltage (kV)	Applied Time
3.3~6.2	10	2.5sec ON/ 2.5sec OFF 5cycles
6.8~10	7	
11~9.1K	5	
10K~91K	7	
100K~33M	10	
PRM 1/4W	2	