

# ER-DBTP-USB04W-1

## Resistive Touch Controller Board Datasheet



## EastRising Technology Co., Limited

Rev	Description	Release Date
1.0	Preliminary Release	Aug-06-2018

# CONTENTS

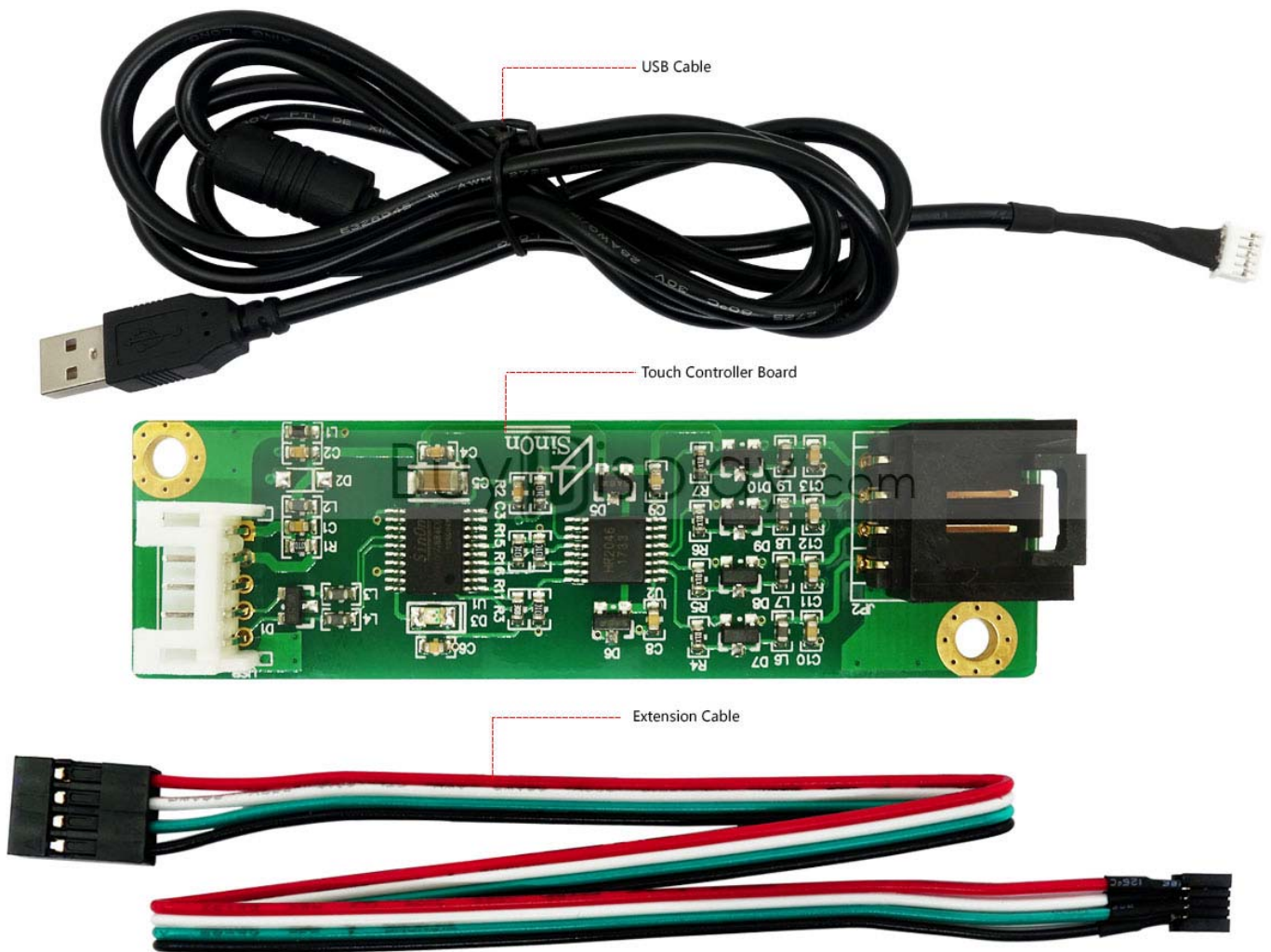
<b>1. ORDER INFORMATION</b>	03
1.1 Order Number	03
1.2 Image	03
<b>2. SPECIFICATION</b>	04
<b>3. OPERATING SYSTEM COMPATIBILITY</b>	05
<b>4. OUTLINE DRAWING</b>	06
4.1 Touch Controller Board Outline Drawing	06
4.2 Cable Outline Drawing	07
<b>5. PRECAUTIONS FOR USING</b>	08
5.1 Power Supply Precautions	08
5.2 Operating Precautions	08
5.3 Limited Warranty	08
5.4 Return Policy	09

## 1. ORDERING INFORMATION

### 1.1 Order Number

Part Number(Order Number)	Description
ER-DBTP-SUB04W-1	Resistive Touch Controller Board with USB cable and extension cable

### 1.2 Image



## 2. SPECIFICATION

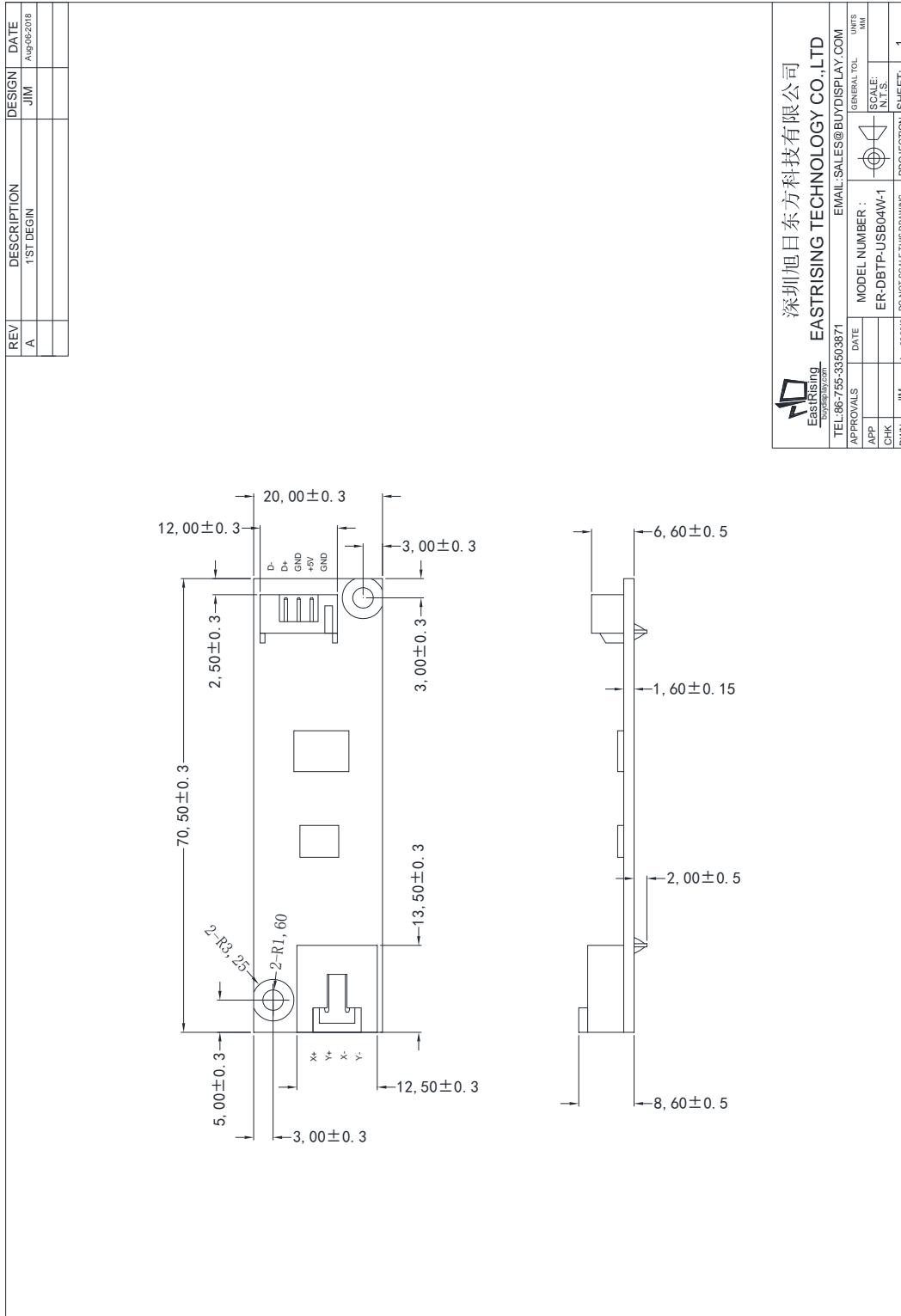
Item	Standard Value	Unit
Supporting Size of Touch Screen	1.5 ~24	inch
Calibration	Support 4 and 25 points of calibration	--
Communications Protocol	USB	--
Resolution	2048 x 2048	dot
Operation Voltage	4.4 ~ 5.5	V
Power Consumption	50~120	mA
Operating Temperature	-40 ~ 85	°C
Storage Temperature	-40 ~ 85	°C
Dimensions	70.50 (L) x 20.0 (W) x 10.60 (H)	mm
Mouse Right Button	Support Mouse Right Button	--
Monitor	Support Multi-monitor	--

### **3.OPERATING SYSTEM COMPATIBILITY**

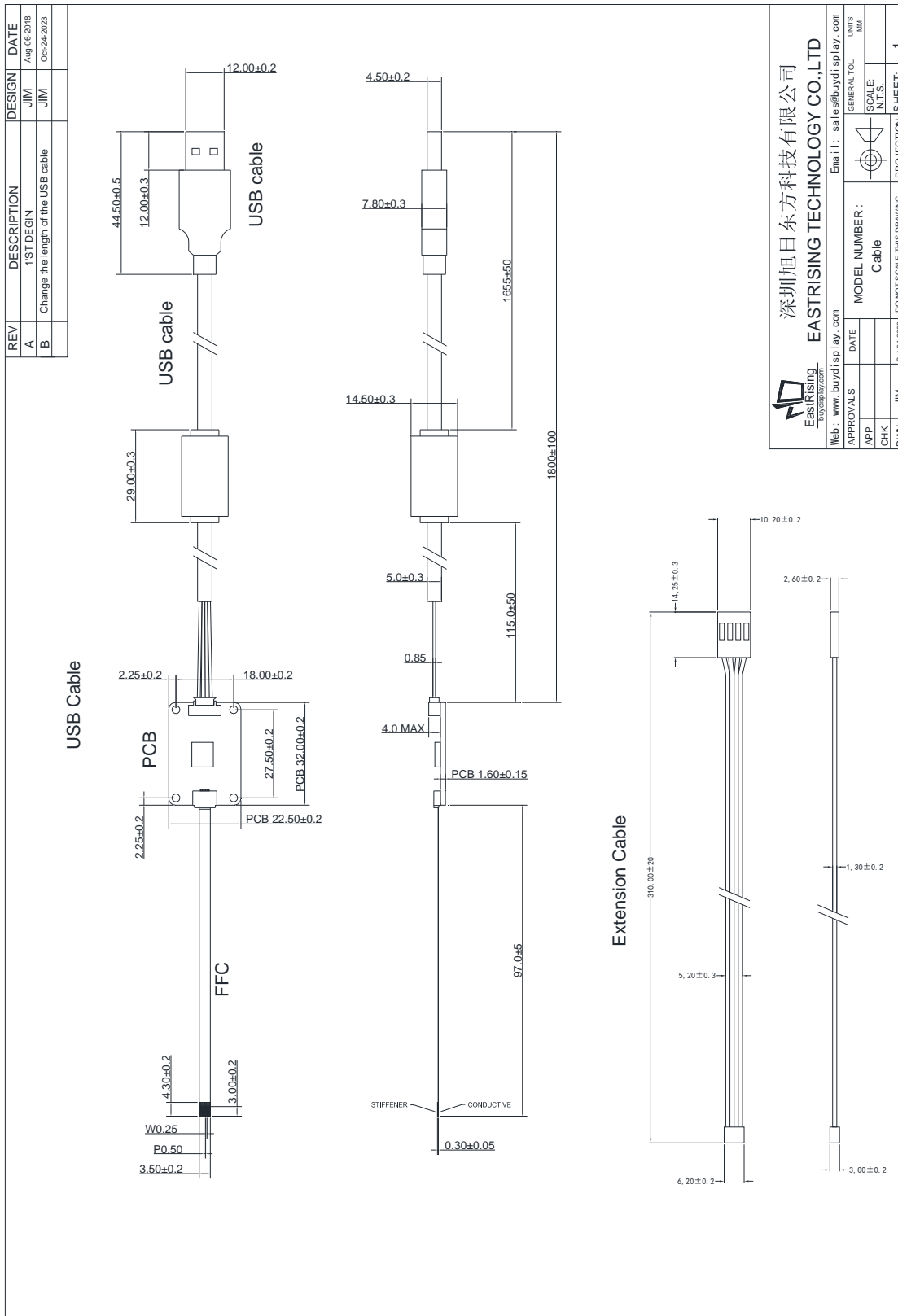
System	Version
Windows	Windows 8, 8.1, 7, Vista, XP, 2000, ME, 98 Windows CE (up to 7.0) Windows Embedded Windows XP Tablet PC edition Windows NT4
Linux	Supports Kernel 2.4.x / 2.6.x / 3.x with XFree86.4.x / xorg (up to X server 1.11.x) Supports most Linux distribution 32/64 bit versions, including: CentOS, Debian, Fedora, Gentoo, Mandrake (Mandriva), Moblin (Meego), Red Hat, Ubuntu, Slackware, SuSE (openSuSE), etc.
Android	Up to 4.x
Dos	DOS 6.22
Mac	Mac OS9, Mac OS X (Power PC, Intel CPU)

## 4. OUTLINE DRAWING

### 4.1 Touch Controller Board Outline Drawing



4.2 Cable Outline Drawing



深圳旭日东方科技有限公司  
EASTRISING TECHNOLOGY CO.,LTD

Web: www.buydisplay.com Email: sales@buydisplay.com

APPROVALS	DATE	GENERAL TOL	UNITS
APP		SCALE:	MM
CHK		N.T.S.	
DWN	JIM	DO NOT SCALE THIS DRAWING.	PROJECTION SHEET: 1

MODEL NUMBER: Cable

## **5. PRECAUTIONS FOR USING**

### 5.1 Power Supply Precautions

- ◆ Identify and, at all times, observe absolute maximum ratings for both logic and LC drivers. Note that there is some variance between models.
- ◆ Prevent the application of reverse polarity to VDD and VSS, however briefly.
- ◆ Use a clean power source free from transients. Power-up conditions are occasionally jolting and may exceed the maximum ratings of EastRising modules.
- ◆ The VDD power of EastRising module should also supply the power to all devices that may access the display. Don't allow the data bus to be driven when the logic supply to the module is turned off.

### 5.2 Operating Precautions

- ◆ DO NOT plug or unplug EastRising module when the system is powered up.
- ◆ Minimize the cable length between EastRising module and host MPU.
- ◆ For models with backlights, do not disable the backlight by interrupting the HV line. Unload inverters produce voltage extremes that may arc within a cable or at the display.
- ◆ Operate EastRising module within the limits of the modules temperature specifications. .

### 5.3 Limited Warranty

Unless agreed between EastRising and customer, EastRising will replace or repair any of its LCD modules which are found to be functionally defective when inspected in accordance with EastRising LCD acceptance standards (copies available upon request) for a period of one year from date of shipments. Cosmetic/visual defects must be returned to EastRising within 90 days of shipment.

Confirmation of such date shall be based on freight documents. The warranty liability of EastRising



limited to repair and/or replacement on the terms set forth above. EastRising will not be responsible for any subsequent or consequential events.

#### 5.4 Return Policy

No warranty can be granted if the precautions stated above have been disregarded. The typical examples of violations are:

- Broken LCD glass.
- PCB eyelet damaged or modified.
- PCB conductors damaged.
- Circuit modified in any way, including addition of components.
- PCB tampered with by grinding, engraving or painting varnish.
- Soldering to or modifying the bezel in any manner.

Module repairs will be invoiced to the customer upon mutual agreement. Modules must be returned with sufficient description of the failures or defects. Any connectors or cable installed by the customer must be removed completely without damaging the PCB eyelet' s, conductors and terminals.

That' s the end of the datasheet