



MC2

Two-slot intelligent portable
Battery Charger

Compatible with IMR batteries
Three-stage intelligent charging (TC-CC-CV)

Charge two
14500/14650/16340/17500/17670/
18350/18500/18650/18700
3.6V/3.7V lithium battery
Compatible with different sizes of batteries





MC2

Two-slot intelligent portable
Battery Charger

Charge Parameter:

Input Power: 5.0V DC/1000mA

CC Current: 500mA or 250mA

Cut-Off Voltage: 4.20V

Operation Temperature: 0-40 °c





MC2

Two-slot intelligent portable
Battery Charger

0V activation to repair over-discharged batteries

Soft-start function,
to avoid large charging currents surge



**Provide reverse-polarity protection
& short circuit protection**





MC2

Two-slot intelligent portable
Battery Charger

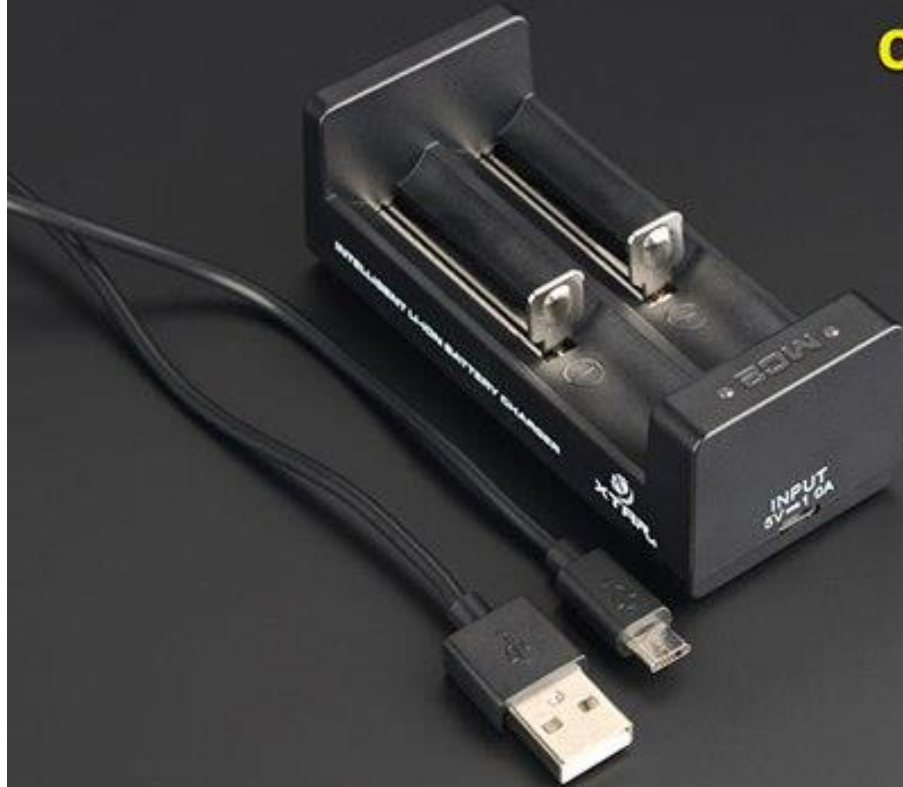
- ✓Intelligently adjust current options (0.5A/0.25A)
- ✓Compatible with USB cable and any USB port adaptor
- ✓Charge two 14500/14650/16340/17500/17670/18350/18500/18650/18700 3.6V/3.7V Li-ion batteries.
- ✓Three-stage charging and 0V battery activation.
- ✓Low voltage and over heat protection.
- ✓LED indicators do real-time status indication.
- ✓Adopt high efficiency DC-DC circuit, lower the voltage and reduce energy loss.
- ✓Reverse-polarity and short circuit protection.
- ✓Soft starts function and over discharged battery activation function.
- ✓Compact and portable





MC2

Two-slot intelligent portable
Battery Charger



**Compatible with USB cable
& any USB port adaptor**

Wall adaptor
Solar panel
computer supplying power





MC2

Two-slot intelligent portable
Battery Charger



Red on

Battery is being charged
activated or channels are
performing short circuit



Green on

Any of the following conditions:
Charge is complete
No battery is inserted
Poor connection Standby mode



Lights off

Battery polarity is reversed



MC2

Two-slot intelligent portable
Battery Charger



Low heat Design

15°C Maximum Temperature Rise

Safely protected by fireproof ABS material

Soldering with leadless solder wire